

Bridge City Center for Youth

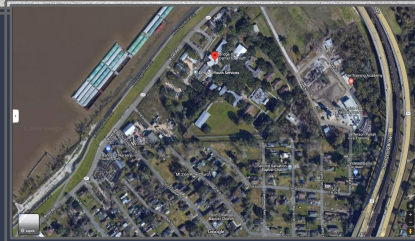
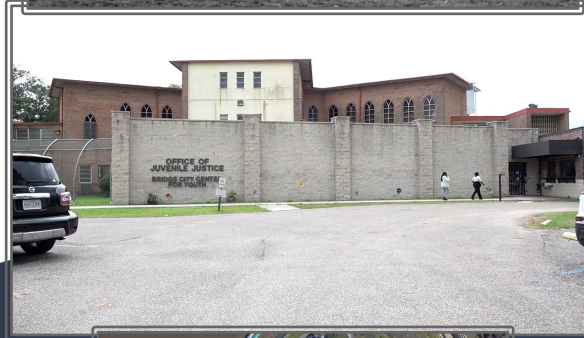
3225 River Road, Bridge City, LA 70094

HISTORY + DESIGN

- First opened as Our Lady of the River convent in 1961
- Purchased by La. D.O.C. in 1971 to function as juvenile detention center.
- Now functions as a maximum-security secure care facility under the supervision of the OJJ.
- Within walking distance from the homes of Bridge City residents.
- 30-acre campus with several buildings and facilities including dormitory bays, a chapel, classrooms, medical facilities, recreation rooms, a gymnasium, and an outdoor pavilion.
- Inmates are housed in dormitory-style made up of 5 open-bay dorms and 3 isolation/segregation rooms.
 - Very little restriction/security over the movement and actions of inmates; thought to be a primary cause for facility's regular violence and escapes

POPULATION

- Male juveniles 12-20 years old
 - Majority adjudicated for violent offenses
- In Q4 of 2021, Jefferson Parish held 21 juveniles in secure custody.
 - 95% male
 - 81% African-American



OVERSIGHT+NEWS

- ACA accredited in 1994: remains in good standing
- 2021 PREA Audit; all 43 standards met
- 2020 Performance Audit by La. Legislative Auditor, investigating use of room confinement/isolation; only few recommendations to cut down on use of isolation.
- Audits seem to be at odds with actual incidents.
- Countless news reports on escapes, riots, attacks on both other inmates and staff, crimes committed by escaped inmates, the revolving door of directors and staff at BCCY, the many calls to shut the facility down by the community, the transfer of the “most violent offenders” to Angola...the list goes on.
- How can a facility that has dozens of escapes and violent incidents per year have met all 43 different standards of quality just a year ago?

Inmate Mortality

- No data received for years 2020-2022
- According to past years' data, there have been no deaths reported at the Bridge City Center for Youth since 2014.
- No mention of deaths in various news articles or other audits, either.